

More battery & charger demand, please contact us for details



High-end Smart Battery &
Charger Solution and Manufacturer
整体智能电池&充电器解决方案和制造商

Spard 世豹®
Battery Solution Expert



DRONE & UAV BATTERIES CATALOGUE

无人机锂电池



SGS UKAS MANAGEMENT SYSTEMS ISO 9001 RoHS UL CE UH PS IEC62133

V2.5

COMPANY PROFILE



Based on 30 Years experience at producing battery, we own over 100 patents to become one of the leading professional high technology battery manufacturer in China. Excellent quality, technology innovation are our everlasting principle.

We are a structured and stable company, devoting in long term business cooperation relationship. Our products all follow the safety guidance to make design & production. As a professional battery expert, we provide customer high quality cells, BMS, battery pack and charger, and our strong R&D team can do customized design to help customer save time to launch new product more quickly.

Our factory got ISO9001 certified. Product designed to comply with UL, CE, PSE, KC, RoHS, UN38.3, ect., and e-bike battery BMS have got ISO13849 certified by SGS & TUV.

Devoting in the battery industry, we always pursued the perfect product quality and professional service. And product Liability Insurance we buy every Year for double guarantee. Cooperate with us can help you get a huge advantage. We are proud of being your battery solution expert and a reliable partner to provide battery with excellent quality for now and future.

世豹是一家致力于绿色环保锂电池和配套充电器等新能源产品研发、生产制造、销售为一体的国家高新技术企业，拥有自主知识产权高端核心技术，坐落于伟人孙中山故里广东省中山市南朗，占地面积4万7000平米。公司坚持高端市场定位，致力于为客户提供整体电池解决方案，拥有自主品牌YUNTONG、SPARD，产品远销北美、欧洲、日本、俄罗斯等世界各地，与部分世界500强公司、多家跨国公司、欧美上市公司结成战略合作伙伴。

坚持不断创新的技术、优良的质量、专业的方案、专注的服务支持着世豹在行业内赢得良好的品牌美誉度。世豹与国内著名大学合作成立研发中心，依托雄厚的技术力量，运用先进的生产设备，检测设备，采用先进的管理模式和完善的售后服务体系。公司通过ISO9001 2015质量管理体系认证，产品通过了美国UL认证，欧盟CE认证，日本PSE认证，韩国KC认证，欧盟RoHS环保认证、UN38.3运输认证、动力电池BMS取得了SGS/TUV认证的ISO13849证书等，拥有100多项发明、实用新型和外观专利，同时还购买了产品安全责任险，进一步提升了世豹品牌的实力。

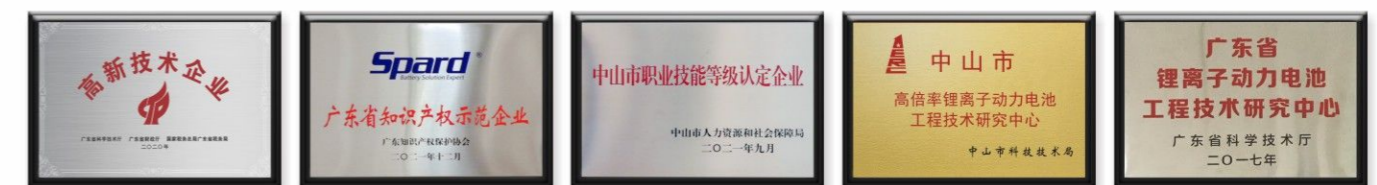
世豹锂电池凭借重量轻、能量比大、安全等特点广泛应用于无人机、RC遥控模型，机器人、电动自行车、汽车及摩托车启动、储能、电动工具、军事装备、医疗设备等领域。公司现有多条专业的锂电池生产线，并且还在不断扩产中，配备德国、美国、日本先进的检测设备，恒温恒湿无尘生产车间，用心制造高品质的锂电池和配套充电器。

世豹 - 高端智能无人机电控及充电器专家，期待成为您的战略合作伙伴！



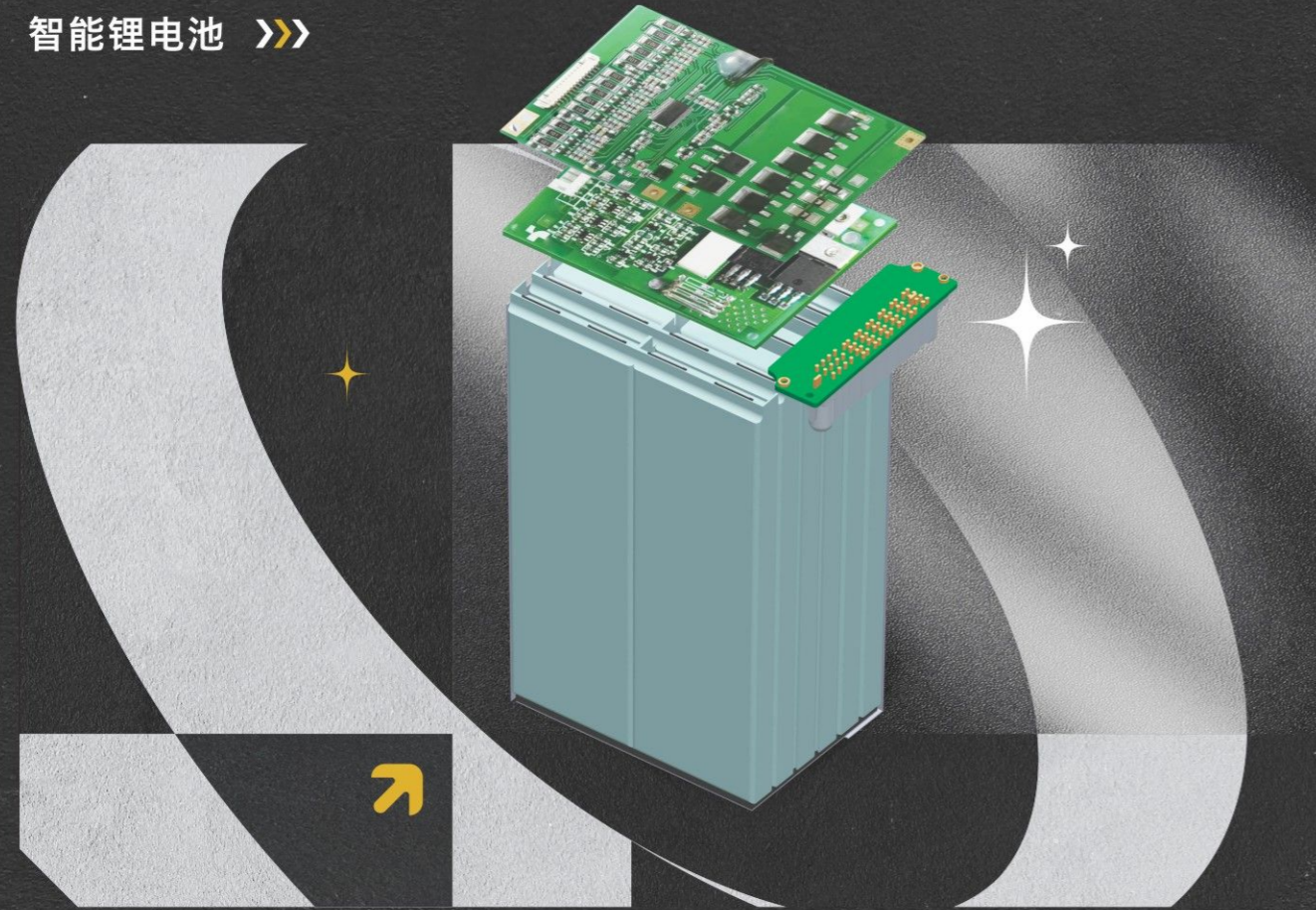
荣誉资质 Honor and Qualification

RoHS IEC62133



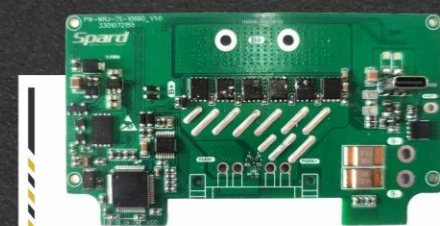
INTELLIGENT LITHIUM BATTERY

智能锂电池 >>>



SMART BMS FOR REFERENCE

智能保护板 >>>







SMART BMS FUNCTION

智能锂电池管理系统 >>>

 <p>With SMBUS/I2C/UART communication protocols: cycle time,current, voltage, SOC,SOH can be read. 有带SMBUS/I2C/UART等通讯功能,可读取循环次数,电流,电压,SOC,SOH等</p>	 <p>Secret code 加密</p>
 <p>With LED power display 有LED电量(SOC SOH充电流水)显示</p>	 <p>Intelligent dormancy and storage self discharge protection 智能休眠及存储自放电保护</p>
 <p>Balancing charge function 平衡功能</p>	 <p>Various abnormal intelligent modes with LED Lights flashing and warning 各种异常智能LED灯闪报警模式</p>
 <p>Overcharge protection 过充保护</p>	 <p>Intelligent flight mode (If the continuous current is over 5A, will be alarm, no protection) 有智能飞行模式(持续电流大于5A不做保护只报警)</p>
 <p>Overdischarge protection 过放保护</p>	 <p>temperature monitoring 温度监控</p>
 <p>Log 数据存储</p>	

ADDITIONAL OPTIONAL FUNCTION

可选功能 >>>

 <p>Serial and Parallel mode 可串可并,自定义组合</p>	 <p>Bluetooth transmission and communication 蓝牙传输、通讯</p>	 <p>Pre-charge Function 低电压充电修复电池模式</p>	 <p>Voice Function 语音提示</p>
--	---	--	--

无人机锂电池

DRONE & UAV BATTERIES

超长续航 Extra Long Lasting

电芯能量密度>300Wh/kg, 最高至350Wh/kg
Cell Energy Density>300WH/KG, The Max. Density up to 350WH/KG

动力强劲 Strong power

3~5C持续放电, 7C~10C瞬时放电
3-5C continuous discharge C rate, 7C-10C Max. discharge C rate

安全可靠 Safety and reliability

通过过充、外短路、热冲击、低气压等测试
Pass testing, such as overcharging, external short circuit and thermal shock.

不惧低温 Good low-temperature performance

-20°C容量保持率>80%
Capacity retention rate at -20degree condition, it is over 80%



High density solid-state battery 340Wh/kg 高密度固态电池组

型号	标称电压 (V)	标称容量 (Ah)	能量密度 Wh/kg	充放电电压 (V)	充电倍率 (C)	持续放电倍率 (C)	瞬间放电倍率 (C)	尺寸 (mm)	重量 (kg)
YT6S28000	22.2	28	318.8	15.6~25.2	0.5/1C	2-3C	7-10C	67*77*185	1.95
YT12S28000	44.4	28	317.2	31.2~50.4	0.5/1C	2-3C	7-10C	131*77*187	3.92
YT14S28000	51.8	28	315.3	36.4~58.8	0.5/1C	2-3C	7-10C	153*77*190	4.60
YT6S35000	22.2	35	317.1	15.6~25.2	0.5/1C	2-3C	7-10C	62*91*205	2.45
YT12S35000	44.4	35	310.8	31.2~50.4	0.5/1C	2-3C	7-10C	122*91*207	5.00
YT14S35000	51.8	35	309.9	36.4~58.8	0.5/1C	2-3C	7-10C	141*91*210	5.85
YT6S40000	22.2	40	322.9	15.6~25.2	0.5/1C	2-3C	7-10C	69*91*205	2.75
YT12S40000	44.4	40	317.1	31.2~50.4	0.5/1C	2-3C	7-10C	135*91*207	5.60
YT14S40000	51.8	40	314.9	36.4~58.8	0.5/1C	2-3C	7-10C	156*91*210	6.58

High voltage solid-state battery 320Wh/kg 高压固态电池组



型号	标称电压 (V)	标称容量 (Ah)	能量密度 Wh/kg	充放电电压 (V)	充电倍率 (C)	持续放电倍率 (C)	瞬间放电倍率 (C)	尺寸 (mm)	重量 (kg)
YT6S38000	23.4	38	304.5	16.5~26.7	0.5/1C	2-3C	5-7C	67*104*205	2.92
YT12S38000	46.8	38	296.2	33~53.4	0.5/1C	2-3C	5-7C	132*104*207	5.85
YT14S38000	54.6	38	297.6	38.5~62.3	0.5/1C	2-3C	5-7C	155*104*210	6.97
YT6S32000	23.4	32	290.2	16.5~26.7	0.5/1C	2-3C	7-10C	63*84*230	2.58
YT12S32000	46.8	32	286.9	33~53.4	0.5/1C	2-3C	7-10C	125*84*232	5.22
YT14S32000	54.6	32	287.4	38.5~62.3	0.5/1C	2-3C	7-10C	145*84*235	6.08
YT6S26000	23.4	26	296.8	16.5~26.7	0.5/1C	2-3C	5-7C	67*77*185	2.05
YT12S26000	46.8	26	293.2	33~53.4	0.5/1C	2-3C	5-7C	132*77*190	4.15
YT6S23000	23.4	23	283.3	16.5~26.7	0.5/1C	2-3C	7-10C	63*77*185	1.90
YT12S23000	46.8	23	280	33~53.4	0.5/1C	2-3C	7-10C	125*77*190	3.84



High power battery 300Wh/kg 高功率电池组

型号	标称电压 (V)	标称容量 (Ah)	能量密度 Wh/kg	充放电电压 (V)	充电倍率 (C)	持续放电倍率 (C)	瞬间放电倍率 (C)	尺寸 (mm)	重量 (kg)
YT6S33000	22.2	33	271.3	16.5~25.2	0.5/1C	3-5C	7-10C	63*104*205	2.70
YT12S33000	44.4	33	268.8	33~50.4	0.5/1C	3-5C	7-10C	125*104*207	5.45
YT6S31000	22.2	31	264.7	16.5~25.2	0.5/1C	3-5C	7-10C	63*84*230	2.60
YT12S31000	44.4	31	266.2	33~50.4	0.5/1C	3-5C	7-10C	125*84*232	5.17
YT6S25000	22.2	25	269.4	16.5~25.2	0.5/1C	3-5C	7-10C	67*77*185	2.06
YT12S25000	44.4	25	270.7	33~50.4	0.5/1C	3-5C	7-10C	132*77*190	4.10
YT6S22000	22.2	22	261.2	16.5~25.2	0.5/1C	3-5C	7-10C	63*77*185	1.87
YT12S22000	44.4	22	264	33~50.4	0.5/1C	3-5C	7-10C	125*77*190	3.70
YT6S18000	22.2	18	261.2	16.5~25.2	0.5/1C	3-5C	7-10C	52*77*185	1.53
YT12S18000	44.4	18	262	33~50.4	0.5/1C	3-5C	7-10C	103*77*190	3.05

AGRICULTURAL SPRAYING DRONE BATTERY

NEW 

intelligent Battery With Shell

植保机电池 / 带壳智能电池



Model 型号	Nominal Voltage(V) 标称电压	Nominal Capacity(mAh) 标称容量	Continuous Discharge Rate(C) 持续放电电流	Instantaneous Discharge Rate(C) 瞬间放电电流	Standard Charging Rate(C) 标准充电电流	Maximum Charging Rate(C) 最大充电电流	Dimension(mm) 尺寸	Weight Approx(kg) 重量
YT44412ZB	44.4V	12AH	15C	30C	0.5C	3C	235*162*90	3.9
YT44416ZB	44.4V	16AH	15C	30C	0.5C	3C	235*162*90	4.8
YT51816ZB	51.8V	16AH	15C	30C	0.5C	3C	235*162*90	5.4



Output Plug: AS150U-F Plug
输出插头: AS150U-F Plug



Battery Indicator
电量指示



Automatic balance
自动均衡



Temperature Protection
温度保护



CAN Communication
CAN通讯

Model 型号	Nominal Voltage(V) 标称电压	Nominal Capacity(mAh) 标称容量	Continuous Discharge Rate(C) 持续放电电流	Instantaneous Discharge Rate(C) 瞬间放电电流	Standard Charging Rate(C) 标准充电电流	Maximum Charging Rate(C) 最大充电电流	Dimension(mm) 尺寸	Weight Approx(kg) 重量
YT53222ZB	53.2V	22AH	15C	30C	0.5C	3C	272*265*136	7.6
YT53228ZB	53.2V	28AH	15C	30C	0.5C	3C	272*265*136	8.6
YT66622ZB	66.6V	22AH	15C	30C	0.5C	3C	272*265*136	9.2
YT68422ZB	68.4V	22AH	15C	30C	0.5C	3C	272*265*136	9.0
YT66628ZB	66.6V	28AH	15C	30C	0.5C	3C	272*265*136	10.7
YT68428ZB	68.4V	22AH	15C	30C	0.5C	3C	272*265*136	10.5



Output plug:
Prolanv PDC28-10 hard plug
输出插头:
Prolanv PDC28-10 hard plug



Overcharge/
overdischarge Protection
过充/过放保护



Overcurrent
Protection
过流保护



Short Circuit
Protection
短路保护



Battery Indicator
电量指示



Automatic balance
自动均衡



Temperature
Protection
温度保护



CAN
Communication
CAN通讯

CONNECTOR FOR REFERENCE

电池插头



XT150 female plastic shell male terminal
XT150母胶壳公端子



AS150(male plastic with female terminal)
AS150公胶壳母端子



Red AS150 plastic housing and terminals
红色AS150胶壳和端子



Black AS150 plastic case and terminals
黑色AS150胶壳和端子

FAST CHARGING BATTERY

高功率快充电池系列 >>>

NEW



Model 型号	Nominal Voltage (V) 标称电压	Nominal Capacity (mAh) 标称容量	Cell energy density 电芯能量密度	Continuous Discharge Rate(C) 持续放电电流	Instantaneous Discharge Rate(C) 瞬间放电电流	Standard Charging Rate(C) 标准充电电流	Maximum Charging Rate(C) 最大充电电流	Dimension (mm) 尺寸	Weight Approx(kg) 重量
YT22212HHS	22.2V	12Ah	220Wh/kg	10C	15C	0.5C	5C	185*74*56	1.45
YT22216HHS	22.2V	16Ah	220Wh/kg	10C	15C	0.5C	5C	185*74*74	1.85
YT22223HHS	22.2V	23Ah	220Wh/kg	10C	15C	0.5C	5C	205*102*68	2.57
YT44412HHS	44.4V	12Ah	220Wh/kg	10C	15C	0.5C	5C	115*74*187	2.8
YT44416HHS	44.4V	16Ah	220Wh/kg	10C	15C	0.5C	5C	150*74*187	3.65
YT44423HHS	44.4V	23Ah	220Wh/kg	10C	15C	0.5C	5C	140*102*207	5.1

● Feature: 5C fast charging, save charging time.



270Wh/Kg HIGH CAPACITY BATTERY

270Wh/Kg高能量密度电池系列 >>>

NEW



Model 型号	Nominal Voltage (V) 标称电压	Nominal Capacity (mAh) 标称容量	Cell energy density 电芯能量密度	Continuous Discharge Rate(C) 持续放电电流	Instantaneous Discharge Rate(C) 瞬间放电电流	Standard Charging Rate(C) 标准充电电流	Maximum Charging Rate(C) 最大充电电流	Dimension (mm) 尺寸	Weight Approx(kg) 重量
YT22216HS	22.2V	16Ah	270Wh/kg	5C	10C	0.5C	2C	185*74*56	1.47
YT22218HS	22.2V	18Ah	270Wh/kg	5C	10C	0.5C	2C	205*102*42	1.68
YT22222HS	22.2V	22Ah	270Wh/kg	5C	10C	0.5C	2C	205*102*50	2.02
YT22222HS	22.2V	22Ah	270Wh/kg	5C	10C	0.5C	2C	228*84*56	2.02
YT22228HS	22.2V	28Ah	270Wh/kg	5C	10C	0.5C	2C	205*102*63	2.45
YT22228HS2	22.2V	28Ah	270Wh/kg	5C	10C	0.5C	2C	228*84*68	2.45
YT22227HS	22.2V	27Ah	270Wh/kg	5C	10C	0.5C	2C	203*90*68	2.38
YT22230HS	22.2V	30AH	270Wh/kg	5C	10C	0.5C	2C	203*90*74	2.67
YT44422HHS	44.4V	22Ah	270Wh/kg	5C	10C	0.5C	2C	100*102*207	4.05
YT44428HHS	44.4V	28Ah	270Wh/kg	5C	10C	0.5C	2C	125*102*207	4.80
YT44430HHS	44.4V	30Ah	270Wh/kg	5C	10C	0.5C	2C	147*90*203	5.35
YT23122G	23.1V	22Ah	270Wh/kg	5C	10C	0.5C	2C	70*74*185	2.00
YT23130G	23.1V	30Ah	270Wh/kg	5C	10C	0.5C	2C	70*102*205	2.60
YT46222G	46.2V	22Ah	270Wh/kg	5C	10C	0.5C	2C	136*74*185	4.20
YT46230G	46.2V	30Ah	270Wh/kg	5C	10C	0.5C	2C	136*102*205	5.40

● Feature: high energy density, 270WH/KG, weight light.



HIGH POWER BATTERY SERIES

高功率系列 >>>

NEW 

Model 型号	Nominal Voltage(V) 标称电压	Nominal Capacity(mAh) 标称容量	Continuous Discharge Rate(C) 持续放电电流	Instantaneous Discharge Rate(C) 瞬间放电电流	Standard Charging Rate(C) 标准充电电流	Maximum Charging Rate(C) 最大充电电流	Dimension(mm) 尺寸	Weight Approx(g) 重量
YT22210EH	22.2V	10000mAh	25C	50C	0.5C	3C	185*74*51	1500
YT22212EH	22.2V	12000mAh	25C	50C	0.5C	3C	185*74*58	1700
YT22216EH	22.2V	16000mAh	25C	50C	0.5C	3C	185*74*73	2100
YT22222EH	22.2V	22000mAh	25C	50C	0.5C	3C	205*102*65	2700
YT22225EH	22.2V	25000mAh	25C	50C	0.5C	3C	205*102*73	3100
YT44416EH	44.4V	16000mAh	25C	50C	0.5C	3C	185*74*139	4400
YT44422EH	44.4V	22000mAh	25C	50C	0.5C	3C	205*102*128	5600
YT44425EH	44.4V	25000mAh	25C	50C	0.5C	3C	205*102*139	6400

● Any model can't be found in the index, please check with Spard
● 如需要的产品在列表中找不到请联系世豹

HIGH VOLTAGE BATTERY SERIES

高电压锂电池系列 >>>

Model 型号	Nominal Voltage(V) 标称电压	Nominal Capacity(mAh) 标称容量	Continuous Discharge Rate(C) 持续放电电流	Instantaneous Discharge Rate(C) 瞬间放电电流	Standard Charging Rate(C) 标准充电电流	Maximum Charging Rate(C) 最大充电电流	Dimension(mm) 尺寸	Weight Approx(g) 重量
YT22810V	22.8V	10000mAh	15C	30C	0.5C	3C	185*74*46	1200
YT22812V	22.8V	12000mAh	15C	30C	0.5C	3C	185*74*52	1400
YT22816V	22.8V	16000mAh	15C	30C	0.5C	3C	185*74*64	1800
YT22822V	22.8V	22000mAh	15C	30C	0.5C	3C	205*102*58	2400
YT22825V	22.8V	25000mAh	15C	30C	0.5C	3C	205*102*64	2700
YT45616V	45.6V	16000mAh	15C	30C	0.5C	3C	185*74*124	3800
YT45622V	45.6V	22000mAh	15C	30C	0.5C	3C	205*102*113	5000
YT45625V	45.6V	25000mAh	15C	30C	0.5C	3C	205*102*127	5600

● Any model can't be found in the index, please check with Spard
● 如需要的产品在列表中找不到请联系世豹

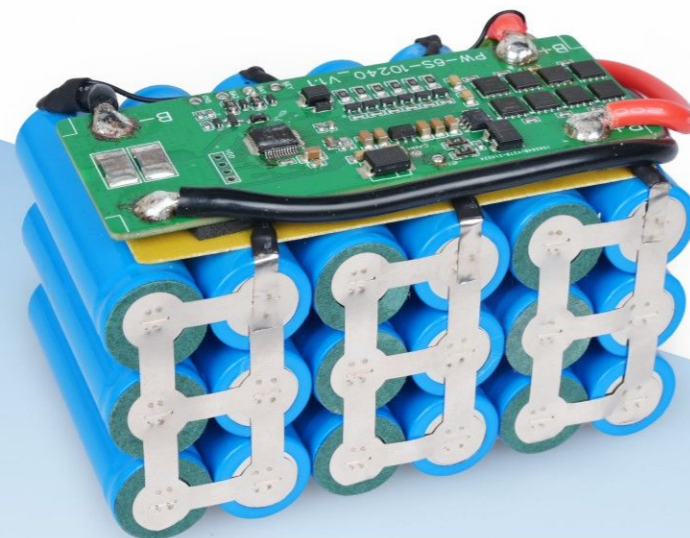


SMART LI-ION BATTERY SERIES

锂离子电池系列 >>>

Model 型号	Nominal Voltage(V) 标称电压	Nominal Capacity(mAh) 标称容量	Continuous Discharge Rate(C) 持续倍率	Pulse Discharge Rate(C) 最大倍率	Dimension(mm) 尺寸			Weight Approx(g) 重量
					Thickness 厚度	Width 宽度	Height 高度	
YT62001	21.6	9000	5	10	42	72	188	900
YT62002	14.4	6000	5	10	38	58	136	535
YT62003	18	6000	5	10	46	58	136	630
YT62004	21.6	14000	3	6	25	82	405	1550
YT62005	21.6	21000	3	6	56	75	135	2130
YT62006	25.9	9000	3	10	23.5	142	207	1002

● Any model can't be found in the index, please check with Spard
● 如需要的产品在列表中找不到请联系世豹



持久续航



电力强劲



性能稳定



智能保护



绿色环保



SMART LITHIUM POLYMER BATTERY SERIES

智能锂电池系列 >>>

Model 型号	Nominal Voltage(V) 标称电压	Nominal Capacity(mAh) 标称容量	Continuous Discharge Rate(C) 持续放电电流	Instantaneous Discharge Rate(C) 瞬间放电电流	Standard Charging Rate(C) 标准充电电流	Maximum Charging Rate(C) 最大充电电流	Dimension(mm) 尺寸	Weight Approx(g) 重量
YT11423S	11.4V	2350mAh	10C	20C	0.5C	3C	85*60*30	200
YT22810S	22.8V	10000mAh	15C	30C	0.5C	3C	185*74*46	1200
YT22812S	22.8V	12000mAh	15C	30C	0.5C	3C	185*74*52	1400
YT22816S	22.8V	16000mAh	15C	30C	0.5C	3C	185*74*64	1800
YT22822S	22.8V	22000mAh	15C	30C	0.5C	3C	205*102*58	2400
YT45616S	45.6V	16000mAh	15C	30C	0.5C	3C	185*74*124	3800
YT45622S	45.6V	22000mAh	15C	30C	0.5C	3C	205*102*113	5000

● Any model can't be found in the index, please check with Spard
● 如需要的产品在列表中找不到请联系世豹

STANDARD LITHIUM POLYMER BATTERY SERIES

标准锂电池系列 >>>

Model 型号	Nominal Voltage(V) 标称电压	Nominal Capacity(mAh) 标称容量	Continuous Discharge Rate(C) 持续放电电流	Instantaneous Discharge Rate(C) 瞬间放电电流	Standard Charging Rate(C) 标准充电电流	Maximum Charging Rate(C) 最大充电电流	Dimension(mm) 尺寸	Weight Approx(g) 重量
YT22210H	22.2V	1000mAh	15C	30C	0.5C	3C	185*74*50	1400
YT22212H	22.2V	1200mAh	15C	30C	0.5C	3C	185*74*58	1500
YT22216H	22.2V	1600mAh	15C	30C	0.5C	3C	185*74*73	2000
YT22222H	22.2V	2200mAh	15C	30C	0.5C	3C	205*102*65	2600
YT22225H	22.2V	2500mAh	15C	30C	0.5C	3C	205*102*73	3000
YT44416H	44.4V	1600mAh	15C	30C	0.5C	3C	185*74*139	4200
YT44422H	44.4V	2200mAh	15C	30C	0.5C	3C	205*102*128	5400
YT44425H	44.4V	2500mAh	15C	30C	0.5C	3C	205*102*139	6200

- Any model can't be found in the index, please check with Spard
- 如需要的产品在列表中找不到请联系世豹



持久续航



电力强劲



性能稳定



智能保护



绿色环保



FPV LITHIUM POLYMER BATTERY

穿越机专用锂电池 >>>

Model 型号	Nominal Voltage(V) 标称电压	Nominal Capacity(mAh) 标称容量	Continuous Discharge Rate(C) 持续倍率量	Pulse Discharge Rate(C) 最大倍率	Dimension(mm) 尺寸			Weight Approx(g) 重量
					Thickness 厚度	Width 宽度	Height 高度	
YTA001	7.4	1000	45	90	13	35.5	72	72
YTA002	11.1	1000	45	90	19	35.5	72	98
YTA007	11.1	1200	75	150	19	31	86	125
YTA003	11.1	1350	45	90	22	35.5	68	118
YTA008	11.1	1550	90	135	25	35.5	68	135
YTA013	11.1	1800	75	150	21	35	105	160
YTA014	11.1	1500	80	160	25	31	85	140
YTA005	14.8	1350	45	90	29	35.5	68	162
YTA011	14.8	1550	75	150	37	35.5	68	176
YTA015	14.8	1800	45	90	32	30.5	95	208

Model 型号	Nominal Voltage(V) 标称电压	Nominal Capacity(mAh) 标称容量	Continuous Discharge Rate(C) 持续倍率量	Pulse Discharge Rate(C) 最大倍率	Dimension(mm) 尺寸			Weight Approx(g) 重量
					Thickness 厚度	Width 宽度	Height 高度	
YTA018	18.5	1800	75	150	42	30.5	95	246
YTA020	22.2	1800	75	100	50	30.5	95	286
YTA025	22.2	2700	45	90	39	37	123	435
YTA041	14.8V	2400	60	95	35	36	107	260
YTA026	22.2V	2400	60	95	51	36	107	390
YTA043	14.8V	4500	60	95	35	45	140	420
YTA027	22.2V	4500	60	95	51	45	140	630
YTA045	14.8V	5000	45	70	38	45	132	475
YTA030	22.2V	5000	45	70	57	45	132	710
YTA047	14.8V	6000	50	90	45	46	132	530
YTA031	22.2V	6000	50	90	68	46	132	790
YTA039	22.2V	7000	50	90	68	45	135	805
YTA052	15.2V	8000	45	70	46	45	135	580
YTA043	22.8V	8000	45	70	68	45	135	860
YTA044	22.2V	8200	45	70	62	52	180	1080

● Any model can't be found in the index, please check with Spard
 ● 如需要的产品在列表中找不到请联系世豹



MICRO QUADCOPTER LITHIUM POLYMER BATTERY

小四轴和迷你飞机专用锂电池 >>>

Model 型号	Nominal Voltage(V) 标称电压	Nominal Capacity(mAh) 标称容量	Continuous Discharge Rate(C) 持续倍率量	Pulse Discharge Rate(C) 最大倍率	Dimension(mm) 尺寸			Weight Approx(g) 重量
					Thickness 厚度	Width 宽度	Height 高度	
YT5055	3.7	150	30	60	6±1	12±1	43±3	6±2
YT5055-A	3.7	200	45	90	5.5±1	12±1	51±3	6±2
YT5055-B	3.7	250	45	90	6±1	12±1	51±3	6.5±2
YT5056	3.7	250	30	60	6.5±1	20±1	38±3	9±3
YT5057	3.7	400	30	60	8.5±1	20±1	38±3	12±3
YT5058	3.7	500	30	60	6.5±1	18.5±1	58±3	15±4
YT5060	3.7	600	15	30	7.5±1	17.5±1	58±3	15±4
YT5061	3.7	600	30	60	9.0±1	25.5±1	46±3	21±4
YT5097	7.4	200	15	30	13±1	21±1	34±2	14±3
YT5097-A	7.4	250	35	70	13.5±1.5	21±1	37±2	17±5
YT5097-B	7.4	280	15	30	11.5±1	21±1	37±2	17±5

● Any model can't be found in the index, please check with Spard
 ● 如需要的产品在列表中找不到请联系世豹